

# HOSE FLUSHING PUMP SETS



**Seawater flushing of marine hoses**

**Prevents oil spillage when removing hose sections**

**Flow rates 200 to 2000 cubic metres/ hour.**

**Optionally ATEX Hazardous Area Approved**



**Reducing operating costs** by using a purpose built flushing unit **improves efficiency and speed** of operation. Seawater flushing of marine hoses is usually a requirement if hose sections are to be removed from **CALM or Spar oil terminals** to prevent oil spillage into the marine environment.

## FLUSHING PUMP SETS ARE DESIGNED TO:

- Rapidly flush out oil residue
- Provide a high volume flow of seawater
- Be readily transportable
- Operate as self-contained units.
- Be of compact design

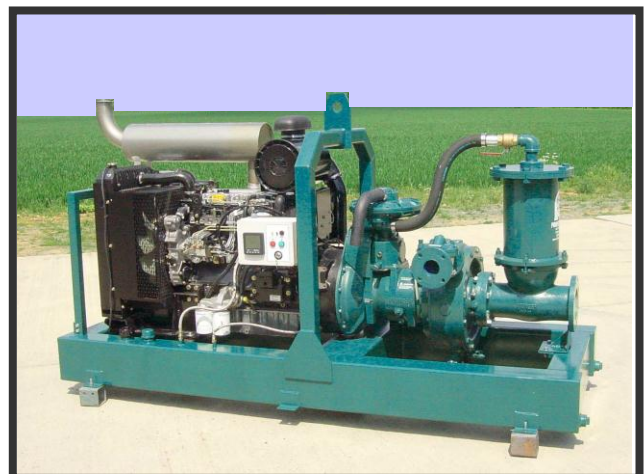
## FLUSHING PUMP SETS TYPICALLY COMPRISE:

- Single stage centrifugal pump
- Direct drive motor
- Pipeline end flanges and connection hoses.
- Automatically primed pump

The specifications below are typical, and dependent on the client's site disposition, pipelines, and pressure head at the terminal.

### FLUSHING LOADING LINES

Flow rate	200 cu metres/ hour
Pressure head	70 Metres
Suction lift	5 Metres
Pump type	Single stage horizontal centrifugal
Power requirement	60 kW
Motor	4 cylinder Turbo-diesel .
Fuel tank	10 hours operation
Package	Skid mounted with lifting eyes and fork apertures
Weight	1600 kgs



### FLUSHING FLOATING HOSE STRING

Flow rate	1000 cu metres/ hour
Pressure head	70 Metres
Suction lift	5 Metres
Pump type	Single stage horizontal centrifugal
Power requirement	150 kW
Motor	6-cylinder diesel, water-cooled, 6 litre.
Fuel tank	10 hours operation
Package	Skid mounted with lifting eyes and fork apertures
Weight	3600 kgs

Units are individually designed to meet customers' specifications